



HARBOUR MASTERS NEWSLETTER

PORTLAND HARBOUR AUTHORITY

COVID-19

We are now all in the grips of this pandemic and under lockdown. We hope everybody is following the government advice to limit their exposure to this virus.



Portland Harbour Authority is following the guidelines with most staff working from home. We would expect all leisure users to do the same and stay off the water.

We wish you well & Stay Safe

[Mark Rowles AHM](#)

APRIL 2020

STAFF PROFILE

GEORGE MAIN : LEISURE CO-ORDINATOR

Hello all, I am now in the Post of Leisure Coordinator as of March, previously held by Emily Reeves. I'm looking forward to getting out on the water and meeting new faces.



What's my background?

Having been brought up in Dorchester I moved to Portland in 2013 where I have settled after my previous career had me living abroad and around the UK.

In 2011 I gained my RYA Start Windsurfing and Dinghy Sailing Instructor qualifications as well as Powerboat Level 2 and Safety Boat tickets. Later I focused on the Windsurfing side becoming advanced

level in my personal sailing and gaining Intermediate Planing and Senior Instructor Status.

I have always had a passion for the water and am a regular Windsurfer usually launching from Ferrybridge or Overcombe on a low tide for some south coast wave action. I enjoy Slalom racing and have some experience with Formula course racing too.

I am looking to gain new qualifications such as commercial endorsements to allow me to crew Pilot and Tug boats eventually building up my skills to be able to Skipper the Pilot boats.

What will I do in my new role?

From April to September you will see me out in the Harbour Masters RHIB patrolling the waters of Portland Inner and Outer Harbour. I will be helping to maintain a safe harbour environment. My other duties include processing of all permits through online and phone sales, keeping our vessel database up to date, and assisting with commercial shipping movements, either in the harbour control or afloat. Alongside this I will be the point of contact for the Hamm Beach Users Group and be attending bi-annual meetings.



Stop alongside for a chat or advice

YOUR QUESTIONS

Q: AS A LEISURE USER CAN I USE EAST SHIP CHANNEL?

A: Yes, you can. East ship channel is the main channel used by commercial shipping. When using this channel there is always the chance a ship could be exiting or entering the Port. Quite often you might see the Pilot Boat hovering near the entrance and keeping a lookout for any leisure traffic. Please take directions from the Pilot Boat if they are

given. Some ships moving through this entrance might be Pilotage Exempt and therefore the Pilot boat would not be in attendance. When approaching this entrance, keep a lookout for the Port Traffic Signals on the top of Fort Head (see previous issue) Be aware that when a ship is on approach to the entrance, they are limited in what action they can take if you stray into their path (see picture below)



Q: SO, WHAT ABOUT NORTH SHIP?

A: Most leisure and recreational vessels use this entrance. Again, watch out for the Port Traffic Signals on C-Head as occasionally this entrance is used by commercial shipping.

LOCAL NOTICE TO MARINERS LNTM

As the Statutory Harbour Authority we are required to keep all mariners informed of important matters affecting navigational safety within our Harbour Limits. To this end we publish LNTM's to our website and to a mailing list of people who would like to be informed. You can find current LNTM's, General Directions and Harbour Master's Directions [HERE](#). **These LNTM's apply to all water users from a Stand-up Paddle Boarder to a Cruise Liner, the latest LNTM's issued are:-**

- [No 09/2020\(T\) Dredging & Deposition Area](#)
- [No 07/2020\(T\) Covid-19](#)
- [No 06/2020\(T\) Towing Trials No2](#)
- [No 05/2020\(T\) Noise Range Special Mark](#)
- [No 01/2020\(T\) Notices in Force 2020](#)

You can subscribe to get the latest safety information emailed to your inbox by following [this link](#).

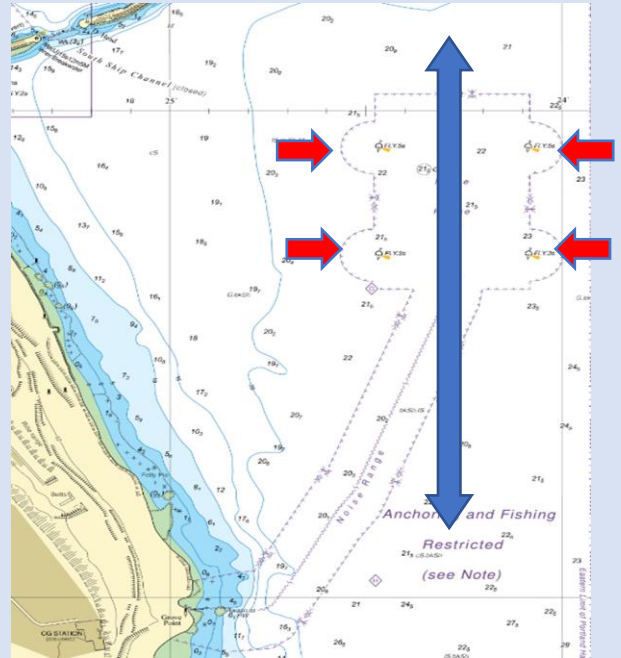
Your information will only be used for this purpose and you can unsubscribe at any time.

DID YOU KNOW?

When passing south of the Port, passing Balaclava Bay, you might notice 4 Yellow Special Mark Buoys. If you look on the chart you will see they form a square with a seabed cable running to the shore. It is annotated as Noise Range. This is an area where MOD vessels transit back and forth (mostly at night) and their sound [signature is analyzed](#). By measuring underwater radiated noise and analysing it in combination with onboard noise and vibration specialists, QinetiQ identifies the specific characteristics that contribute to a platform's vulnerability to being detected by sonar.

Please keep well clear of this area when it's in use. Ranging dates are published weekly and [can be found here](#).

Diving and Fishing is not allowed within the Noise Range area and in the larger area as indicated on the chart 2268.



OPERATION KRACKEN UPDATE

You might have read this article in the last issue regarding suspicious activity afloat or ashore.....

This could include:

- boats arriving at unusual times or to isolated locations
- people taking an interest in port security or buildings
- nervous crew who show a lack of maritime protocols
- people making attempts to signal or guide boats offshore
- people making a large cash payment for maritime equipment
- people being somewhere they shouldn't be
- boats showing signs of unusual modification or minor damage.

Any unusual or suspicious activity **should be reported to Dorset Police via email kraken@dorset.pnn.police.uk or anonymously to [Crimestoppers](#)**.

You might not think would happen around here, well actually it does. On Monday the 24th February a ship berthed within the Port and literally as the gangway came down, four Albanian Stowaways jumped ashore.

Quick action by the Captain of the ship and Portland Port Police soon had the four men detained and taken to a secure location. As their welfare was paramount, they were given food and hot drinks (they has spent 3 nights in a lifeboat) After interviewing the four men, they were arrested as illegal immigrants and transferred into the hands of Dorset Police, and eventually the Border Agency. Keeping a good eye out is heightened due to the ongoing situation with COVID-19



PORT DEVELOPMENT



The berth expansion at Q-Pier is still ongoing. You might notice a small crane barge and some barges moving from Q-Pier out to an area North West of the Tristram. This is the dredging operation which is removing some of the seabed sediment around the pier



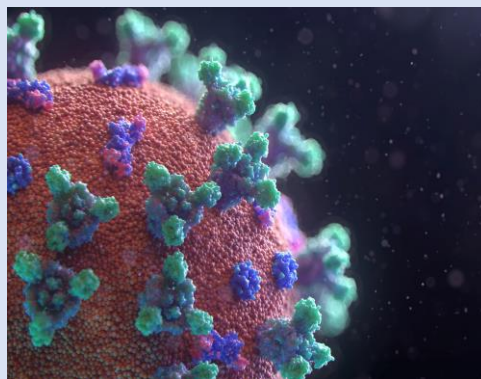
ALL CHART EXTRACTS

“© Crown Copyright and/or database rights. Reproduced by permission of the Controller of Her Majesty’s Stationery Office and the [UK Hydrographic Office](#). NOT TO BE USED FOR NAVIGATION”

PROSECUTIONS (IN THE OTHER DOCK)

The Harbour Authority in conjunction with Portland Port Police have recently taken a Fisherman to Court for laying nets on the Hamm Beach without being in possession of a Fishing Permit. A local Weymouth fisherman appeared in court & pleaded guilty to fishing in the inner harbour without written permission. He was fined £80, ordered to pay £83 costs & £32 Victim Surcharge.

COVID-19



Portland Port Ltd. and Portland Harbour Authority are taking regular guidance from HM Government with regards to the COVID-19 (coronavirus) situation, to view the latest advice that the port and its staff will be following, please follow

the link to updated (2 March 2020) [guidance for staff in the transport sector](#).

FISHING WITH SURFACE NETS

Numerous occasions have arisen whereby fishermen have been leaving surface nets unattended within the harbour, this is contrary to the Portland Harbour Revision Order 1997. We have consulted widely on the dangers of this activity, yet we are still getting reports of this occurring. This activity poses a serious risk to harbour users, in particular the areas of Hamm beach and Newton’s Cove. Harbour users are encouraged to report any such sightings to the Harbour Office as soon as possible such that action can be taken. We will be taking a zero-tolerance approach to this activity due to the inherent dangers.

USEFUL LINKS

[PORTLAND HARBOUR AUTHORITY WEBSITE](#)

[LOCAL LIVE WIND](#)

[BUY HARBOUR DUES AND PERMITS](#)

And if you would like to subscribe to this newsletter, drop me a email at:-

Mark Rowles - Assistant Harbour Master <mailto:m.rowles@portland-port.co.uk?subject=HARBOUR MASTER'S NEWSLETTER>

Any unusual or suspicious activity **should be reported to Dorset Police via email kraken@dorset.pnn.police.uk or anonymously to [Crimestoppers](#).**

Harbour Office 01305 825335