

# FIRST STS OPERATION IS A HUGE SUCCESS AT PORTLAND PORT



PICTURE: The Epic Madeira and Tempest carrying out an STS operation in Portland Harbour

In February of this year, the Portland Port group announced that it was set up and ready to provide ship to ship (STS) operations. On Thursday 29<sup>th</sup> April 2021, the Portland Port group in direct cooperation with STS Marine Solutions Ltd commissioned the port's first STS operation.

Ian McQuade, General Manager Commercial, commented that "the port's first STS operation, carried out in conjunction with STS Marine Solutions, was a huge success for everyone involved. This first operation showed just how well the port and STS Marine Solutions work with each other, and we look forward to carrying out many more STS operations together. Portland Port is ideally located, we have deep water with sheltered anchorages and berths, all of which is in close proximity to the main English Channel shipping lanes."

The LPG STS transfer took place in Portland Harbour, at an inner anchorage, which due to the size of the ships involved, reduced the exposure to potential stronger elements at the outer anchorage, thus demonstrating the Port and STS Marine Solution's ability to handle small sized vessels, ensuring a safe and efficient turnaround for the customer.

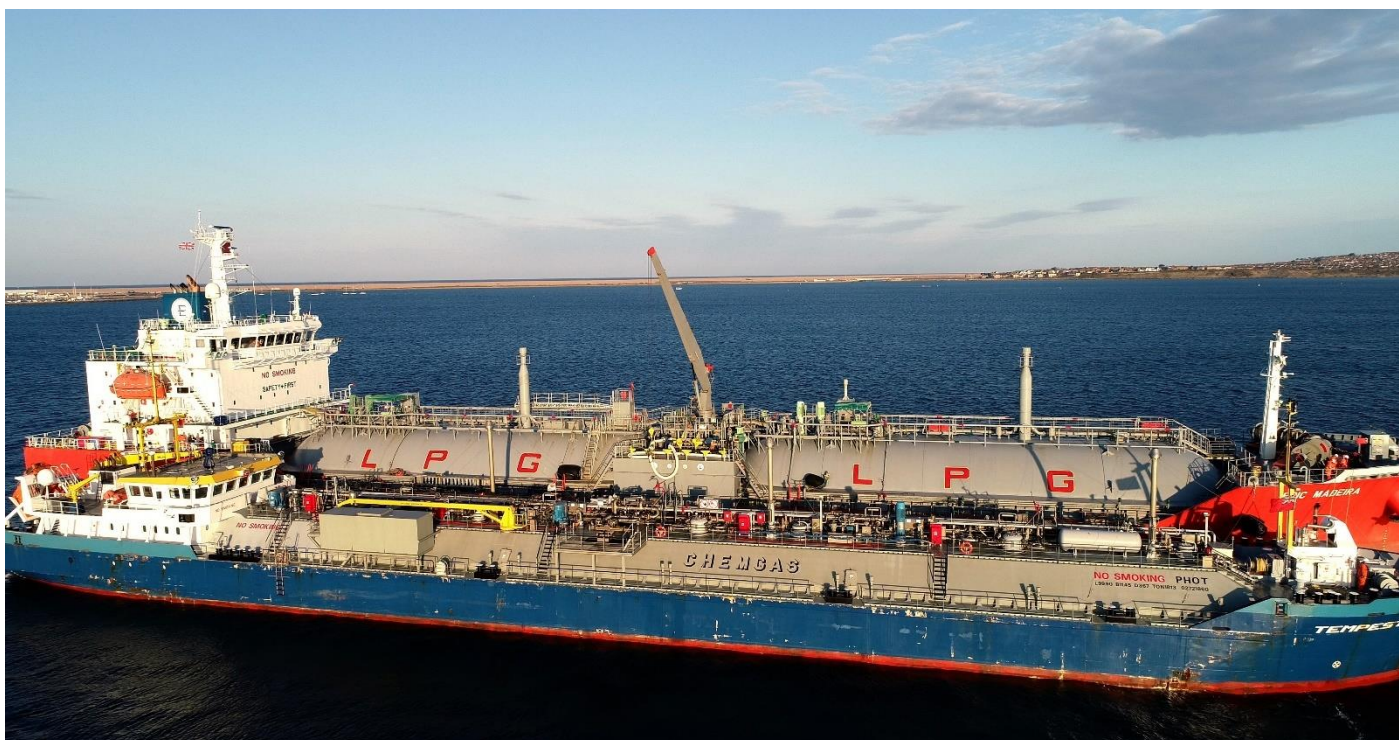
Ian Laws, CEO of STS Marine solutions commented "This is a true milestone for the port and one we are very proud to be instrumental in. This is why the ship-to-ship industry selects STS Marine Solutions as their first-choice service provider, it's our ability to deliver on proof of concept"

STS transfers of LPG product can also take place at an outer anchorage or alongside at Portland Port.

As the Statutory Harbour body, Portland Harbour Authority is required to ensure that all STS operations happen in a safe manner; between them and STS Marine Solutions, all the necessary risk assessments are carried out and decisions made about the most suitable location, taking into account all the variables.

STS Marine Solutions is a world leading ship to ship service provider with over 36 years experience in crude oil, refined petroleum, LPG and LNG transfers. They provide the necessary expertise and oversight to assist in the safe completion of the operation.





PICTURE: Tempest in the foreground with the Epic Madeira behind

## NOTES TO EDITORS

All copyright of Portland Port.

For more information or images please contact our cruise department on 01305 824044 or email [media@portland-port.co.uk](mailto:media@portland-port.co.uk)

Previously a naval dockyard for over 150 years, Portland Harbour is now a thriving and successful commercial facility. It still maintains a close relationship with the past through its ongoing contract to support the RFA, as well as being home to the activities of Global Marine and Portland Bunkers UK. It has almost 2,500 hectares of water at depths of up to 15m (C.D.); and provides vessel services from long term lay-ups to brief maintenance calls, luxury cruise liner docking facilities to industrial cargo shipments.

The tariff and general Portland Harbour Authority information can be viewed at <http://www.portland-port.co.uk/>

Portland Port has over 2,000 metres of alongside berths and 11.6 metres (C.D.) depth of water at the deepest alongside berth.

Berthing for vessels up to 350 metres (subject to Harbour Master's discretion).

11 designated anchorages are within the 1,015-hectare inner harbour. Six designated anchorages are within the 1,436-hectare Outer Harbour.

A width of 210 metres and depth of over 12.6 metres (C.D.) at the entrance of the harbour mean that there are few vessel beam, lock, or air draft restrictions.